

# COLD WATER

## - WHY COMPROMISE

*professional cold water pressure washers*

**Gerni**  
- danish cleaning power





# Gerni POSEIDON Family

– Efficient cold water cleaning for demanding cleaning task



The Gerni POSEIDON family - a range of powerful yet quiet pressure washers for any application

The POSEIDON family also comprises a range of medium duty and heavy duty pressure washers.

The POSEIDON 5, 7 and 8 lines all offer the benefits of silent power: slow running motor pumps offering optimum lifetime at low, low noise levels. Whether you require high pressure, or high water flow - the POSEIDON line has a model for you.

Valuable partners for even the most intense use in industry, agriculture or the food industry.



▲ POSEIDON 8



▲ POSEIDON 7 / FB



▲ POSEIDON 7



▲ POSEIDON PE



▲ POSEIDON DE



▲ POSEIDON 5



▲ POSEIDON 2 PORTABLE



▲ POSEIDON 3



▲ POSEIDON 4



**SilentPower**  
Quiet Impact

**ErgoSystem**  
Applied Ergonomics



# POSEIDON 8

- High water flow ensures heavy rinsing effect



**POSEIDON 8**

- High water flow ensures heavy rinsing effect
- Ceramic pistons for longer working life
- Ergo 3000 spray gun for unmatched user comfort
- Soft start system
- Slow running 1450 rpm motor with low noise level
- Simple and easy to use



The ultimate cold water unit with very high water flow and high pressure. Ideal for agriculture, construction or food industry.

The Gerni POSEIDON 8 links the advantages of high water flow and high pressure, allowing both cleaning of intense dirt and flushing and rinsing of large quantities of loose dirt.

Technical data:		POSEIDON 8-111 301002956
Pump pressure	bar	180
	MPa	18
Cleaning Impact	kg/Force	11.1
Water flow, Qmax/QIEC	l/h	2100/2050
Max. inlet temp.	°C	50
Power consumption	kW	14
Voltage/phase/ frequency/current	V/~/Hz/A	400/3/50/24
Pump	RPM	1450
Weight	kg	98
Dimensions L x W x H	mm	900 x 910 x 660
HP hose	m/Ø	10/DN12
Standard equipment:		
Ergo 3000 Gun		●
Ergo 3000 lance		Tornado
Tornado Plus nozzle		● 1200
Full ceramic pistons		●

● Standard Accessories      ○ Supplementary Accessories



# POSEIDON 7

- Power, robustness and durability



The ultimate industrial cold water unit with high water flow and high pressure. Ideal for agriculture, industry or food industry.

The Gerni POSEIDON 7 links the advantages of high water flow and high pressure, allowing both cleaning of intense dirt and flushing and rinsing of large quantities of loose dirt. The POSEIDON 7 is equipped with the heavy duty C3 pump with a high inlet temperature of 85° C for use with pre-heated water and additional degreasing effect.



## POSEIDON 7-66

- 4 ceramic pistons
- 1450 rpm motor
- Robust frame
- Inlet temperature up to 85°C (suction 70°C)
- Heavy duty C3 pumps with extended lifetime
- Ergo 3000 spray gun for unmatched user comfort



## POSEIDON 7-66 FB

- 4 ceramic pistons
- 1450 rpm motor
- Robust stainless steel frame (on the FB model)
- Inlet temperature up to 85°C (suction 70°C)
- Heavy duty C3 pumps with extended lifetime
- Ergo 3000 spray gun for unmatched user comfort
- Chemical injector with bypass \*
- Onboard water break tank (\*FB model)



		POSEIDON 7-66 301002954	POSEIDON 7-66 FB 301002953
<b>Technical data:</b>			
Pump pressure	bar	190	190
	MPa	19	19
Cleaning Impact	kg/Force	6.6	6.6
Water flow, Q <sub>max</sub> /Q <sub>IEC</sub>	l/h	1280/1180	1280/1180
Water flow, min.	l/h	1180	1180
Max. inlet temp.	°C	85	70
Suction height	m	1.5	1.5
Power consumption	kW	8.0	8.0
Voltage/phase/ frequency/current	V/~/Hz/A	400/3/50/14	400/3/50/14
Pump	RPM	1450	1450
Sound level - L <sub>pA</sub>	dB(A)	75	75
Weight	kg	74	74
Dimensions L x W x H	mm	1020 x 480 x 940	1020 x 480 x 940
HP hose	m/Ø	10/DN10	10/DN10
<b>Standard equipment:</b>			
Ergo 3000 Gun		●	●
Ergo 3000 lance		Tornado	Tornado
Tornado Plus Nozzle		● 0640	● 0640
Full ceramic pistons		●	●
HP hose reel		○ 301000202	○ 301000540
Chemical Injector with By-pass		○ 6401242	● 6401242

● Standard Accessories ○ Supplementary Accessories

# POSEIDON 5

- High performance, unbeatable ergonomics and user-friendliness



**POSEIDON 5-29**

- Robust frame
- Pressure/flow regulation
- Outstanding ergonomics
- SilentPower - low noise level
- Full ceramic pistons



**POSEIDON 5-54 XT**

- Robust frame
- Pressure/flow regulation
- Outstanding ergonomics
- SilentPower - low noise level
- Full ceramic pistons
- Hose reel
- Detergent tank



The ideal partner for cold water cleaning tasks in all sectors. High performance, unbeatable ergonomics, low noise levels and easy servicing make this an unmatched pressure washer.

The Gerni POSEIDON 5 line comprises 5 models with different levels of performance and equipment adapted to most general cleaning tasks whether they require high pressure or high water capacity. The robust and stable design make the POSEIDON 5 adapted to even the toughest environments. XT versions possess a wide range of additional equipment.



The removable detergent tank is easy to fill and to empty and the level of remaining detergent can be spotted within seconds. Standard equipment on all XT models.

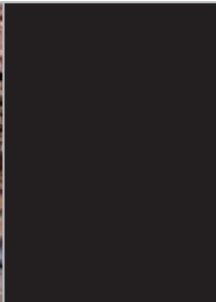
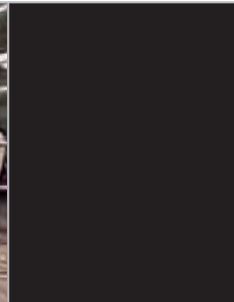
		POSEIDON 5-29 301002951	POSEIDON 5-54 XT 301002952
<b>Technical data:</b>			
Pump pressure	bar	125	200
	MPa	12.5	20
Cleaning Impact	kg/Force	2.9	5.4
Water flow, Qmax/QIEC	l/h	700/650	1030/950
Water flow, min.	l/h	250	250
Max. inlet temp.	°C	60	60
Suction height	m	1.5	1.5
Power consumed	kW	3.4	6.3
Voltage/phase/ frequency/current	V/~/Hz/A	240/1/50/15	400/3/50/12.3
Pump	RPM	1450	1450
Sound level - LpA	dB(A)	66	73
Weight	kg	70	85
Dimensions L x W x H	mm	740 x 550 x 1015	920 x 550 x 1015
HP hose	m/Ø	10/DN8	15/DN8
<b>Standard equipment:</b>			
Ergo Gun		● Ergo 1000	● Ergo 1000
Ergo 3000 lance		Flexopower	Tornado
Ergo 3000 Rotary nozzle lance		○ 106402171	●
Tornado Plus nozzle		● 0450	● 0550
Detergent Tank		○ 301001412	●
Full ceramic pistons		●	●
HP Hose reel		○ 301001310	●

● Standard Accessories    ○ Supplementary Accessories



# POSEIDON 4

- Small and compact yet powerful and efficient  
(Available June)

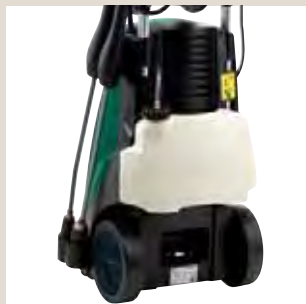


Let the small and compact  
POSEIDON 4 carry out the hard work

The New POSEIDON 4 is a robust and durable addition to our low/mid cold water range. Ideal for use in small and medium agricultural sites, as well in trade and workshops. The POSEIDON 4 is equipped with our ergonomic accessory offering low efforts and quick concept and powered by a 1450 rpm motor offering a long life and high reliability.



Despite having a fully sealed system, the POSEIDON 4 is equipped with oil sight, for quick check of oil-level.



The 4L detergent tank is easy to mount/dismount when emptying or filling (standard equipment on XT-model).



## POSEIDON 4-29

- 1450 rpm pump
- 3 ceramic pistons
- Integrated 4 l detergent tank
- Quick coupling system



## POSEIDON 4-41 XT

- 1450 rpm pump
- 3 ceramic pistons
- Integrated 4 l detergent tank
- Quick coupling system
- Hose reel

Technical data:		POSEIDON 4-29* 301003110	POSEIDON 4-41 XT* 301003111
Pump pressure	bar	160	180
	MPa	16	18
Cleaning Impact	kg/Force	2.9	4.1
Water flow, Q <sub>max</sub> /Q <sub>tec</sub>	l/h	620/560	840/750
Max. inlet temp.	°C	60	60
Number of pistons		3	3
Ceramic Pistons		Yes	Yes
Pump	RPM	1450	1450
Dimensions L x W x H	mm	400 x 400 x 1030	400 x 400 x 1030
Weight	kg	38	45
Power consumption	kW	3.3	5.0
Voltage/phase/ frequency/current	V/~/Hz/A	240/1/50/15	400/3/50/8.5
Suction Height Dry	m	0.5	0.5
Nozzle Size		0400	
Standard equipment:			
Hose		10 m, DN6	15 m, DN6
Ergo 1000 Spray Gun		●	
Ergo 1000 Vario Press Spray Gun			●
Flexopower 3000 Lance		●	●
Gardena Inlet Coupling		●	●
LP Detergent Injection - tube + doser		●	●
Auto Start Stop		●	●
Detergent Tank 4 l			●
Oil Sight, fill		●	●
Hose Reel			●
Turbohammer Lance			●
Cable	m	5	5

\* POSEIDON 4-41 XT and POSEIDON 4-29 will be introduced June 2007

# POSEIDON 3

- Powerful and compact cold water cleaning



**POSEIDON 3-24**

- 3 stainless steel pistons
- Ergonomic design
- Easy to use
- Detergent injector
- Powerful and long-lasting



**POSEIDON 3-30 XT**

- 3 stainless steel pistons
- Ergonomic design
- Integrated hose reel
- Integrated detergent dosing
- Adjustable transport handle



Tradesmen, small building companies, small garages or farms have frequent uses for cold water pressure washers, often cleaning for a small amount of time each day.

The new Gerni POSEIDON 3 line offers an ideal cleaning solution for these frequent, low intensity uses typical of so many customer groups. The POSEIDON 3 line is robust, yet compact – making the machines easy to store or transport and yet very resistant to shocks such as those incurred on construction sites or in the back of commercial vehicles. And in spite of the small size, the POSEIDON 3 line offers high cleaning power in both single and three phase versions.



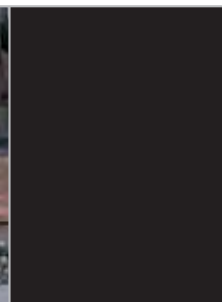
Technical data:		POSEIDON 3-24 301002949	POSEIDON 3-30 XT 301002950
Pump pressure	bar	100	150
	MPa	10	15
Cleaning Impact	kg/Force	2.4	3.0
Water flow, Qmax/QIEC	l/h	660/600	660/600
Water flow, min.	l/h	600	600
Max. inlet temp.	°C	60	60
Suction height	m	0.5	0.5
Power consumed	kW	2.3	3.4
Voltage/phase/ frequency/current	V/~/Hz/A	240/1/50/10	240/1/50/15
Pump	RPM	2800	2800
Weight	kg	34.5	37
Dimensions L x W x H	mm	1020 x 400 x 400	1020 x 400 x 400
HP hose	m/Ø	10/DN6	15/DN6
Standard equipment:			
Ergo 1000 Gun		●	●
Ergo 3000 lance		FlexoPower	FlexoPower
Tornado Plus nozzle		● 0530	● 0400
HP hose reel		○ 301002343	●

● Standard Accessories      ○ Supplementary Accessories



# POSEIDON 2

- Compact cold water power high performance and ergonomics



The compact cold water line that combines high performance level for increased cleaning efficiency, ergonomics and durability for superior everyday cleaning.

The Gerni POSEIDON 2 comprises models designed for everyday semi-professional use mainly by tradesmen, on small construction sites or in rental.

The POSEIDON 2-24 with steel protective bar, are ideal partners around tough environments.

## POSEIDON 2-24 PORTABLE

- Ergonomic and compact design for easy transport
- Steel protective robust roll bar for use in tough environments
- Ergo 1000 accessory concept



Technical data:		POSEIDON 2-24 PORTABLE 301002948
Pump pressure	bar	100
	MPa	10
Cleaning Impact	kg/Force	2.4
Water flow, Q <sub>max</sub> /Q <sub>IEC</sub>	l/h	650/600
Water flow, min.	l/h	600
Max. inlet temp.	°C	40
Suction height dry	m	0.5
Power consumed	kW	2.2
Voltage/phase/ frequency/current	V/~/Hz/A	240/1/50/10
Pump	RPM	2800
Sound level - L <sub>pA</sub>	dB(A)	86.6
Weight	kg	24
Dimensions L x W x H	mm	555 x 290 x 275
HP hose	m/Ø	10/DN8

## Standard equipment:

Ergo 1000 Gun	●
Ergo 3000 lance	● FlexoPower
Tornado Plus nozzle	● 0500
HP hose reel	

● Standard Accessories ○ Supplementary Accessories



# POSEIDON PE / DE

## - The cool facts

Gerni presents a comprehensive range of diesel, and petrol driven pressure washers for professional use. A great combination of high functionality and maximum convenience, technical perfection and a robust design. The ideal solutions for all your cleaning jobs – custom-tailored, efficient, economical.



▲ POSEIDON 2-31 PE



▲ POSEIDON 3-36 PE



▲ POSEIDON 5-67 PE



▲ POSEIDON 5-54 DE

Technical data:		POSEIDON 2-31 PE 106174790	POSEIDON 3-36 PE 106174791	POSEIDON 5-67 PE 106174794	POSEIDON 5-54 DE 106174798
Pressure	bar/MPa	140/14	140/14	230/23	195/19.5
Cleaning impact	kg/Force	3.1	3.6	6.7	5.4
Water flow, Q <sub>IEC</sub>	l/h	650	750	1100	950
Water flow, Q <sub>max</sub>	l/h	700	840	1150	1000
Suction height (primed)	m	1	1	1	1
Pump inlet temperature	°C	60	60	60	60
Motor power	HP	5	5.5	13	10
Motor type		Honda GC 160	Honda GX 160	Honda GX 390	Yanmar Diesel L100AE
Fuel consumption	l/h	1.55	1.7	4	3.1
Motor / Pump	RPM	3400	3400	3400 / 1550	3400 / 1500
Weight	kg	35	38	68	110
Dimensions, L x W x H	mm	800 x 565 x 1010	800 x 565 x 1010	1000 x 615 x 1150	1000 x 615 x 1150
Reduction gear		●	●	●	●
HP Hose	m/Ø	10/DN8	10/DN8	10/DN8	10/DN8
Standard Accessories:					
Ergo Gun		Ergo 1000	Ergo 1000	Ergo 1000	Ergo 1000
Ergo 3000 Lance		FlexoPower	FlexoPower	Tornado	Tornado
Nozzle size		● 0400	● 0500	● 0550	● 0530
Motor throttle		●	●	●	●
Detergent injection (on/off)		●	●	●	●
Electric start		●	●	●	●
Ceramic pistons		●	●	●	●
Pressure control		●	●	●	●



## POSEIDON PE / DE

*For tough use where you have no electric power  
(e.g. on construction sites, agriculture...)*



## Independency, flexibility ... and power

Petrol and diesel powered pressure washers offer the big advantage of being totally independent of usual electrical power sources – and even of normal water networks. They thus offer a great flexibility of use. Being powered by a petrol or diesel run motor, and being able to suck water from a tank, a river or a well, they represent an ideal solution for cleaning agricultural or construction material in the middle of a field or on a building site. Gerni offers a full range of performances and motor sizes making us the ideal partner for the rental business in all of its forms.

### Powerful Cleaning

The wide range of performances ensure that whatever the application, you will find a powerful Gerni product to help you solve the cleaning task quickly and efficiently.

### Flexible Cleaning

All models include pressure-flow regulation at the pump and also detergent injection systems, ideal for solving a wide range of different cleaning tasks.

### Ergonomic use

The large wheels, the lightweight design or the Ergo accessory concept all ensure that the cleaning job is done with the lowest level of effort and stress. Quick and easy cleaning is our business.

• *Large, pneumatic wheels*  
The large pneumatic wheels ensure good manoeuvrability over uneven ground found largely on building sites and in the agricultural environment.

• *Tough and resistant pumps*  
All pumps are conceived for tough use and include full ceramic piston sleeves. The pumps are also simple and quick to maintain and service. The professional models include oil sight glass and oil fill capability.







• **Reliable and Durable Motors**

The new line of petrol models are all equipped with well-known, reliable Honda motors from 5 HP up to 13 HP sizes. Good performances, durability and excellent service organisation are the trademark of Honda. The Diesel model is equipped with a Yanmar 10 HP motor – also well known for the same benefits and including electric start function. All Honda GX + Yanmar motors have a low oil shut off security function. The motor-pumps can be fitted with an optional speed control to reduce noise level when the machine is running idle.



• **Robust, shock resistant frame**

The 30 mm steel frame is tough and shock resistant. Ideal for those tough environments around building sites or agricultural areas.

• **Hose reel**

Additional hose lengths can be easily stored and protected on our tough, metal hose reel



• **Sand filter**

An additional sand filter is a must in construction and agriculture to protect the pump against damage from sand and dirt particles



• **Powerspeed Plus lance**

The Powerspeed Plus lance offers multiple benefits and effects. The rotary jet increases cleaning performance over larger surfaces. The pressure adjustment ensures that you can clean with high pressure but also rinse and apply detergent with one lance



• **Draincleaning kit**

Unblocking drains, toilets and pipes is child's play with our easy to use drain cleaning kits



• **Sandblasting**

Stripping paint or rust is quickly done with the Gerni sandblasting kits



Find these solutions and many more in our main catalogue.



## Professional cold water pressure washers

# The performance, the cleanliness, the advantages



You will obtain the best possible cleaning solution for your installation thanks to...

- Our expertise in planning and installing units
- The most reliable and durable solutions on the market
- A range of options and accessories that enable you to customize the cleaning equipment to satisfy each of your specific needs



Nilfisk-Advance A/S of which Gerni is a division is the number one professional cleaning equipment company with a turnover of 630 million € and 3800 employees. We are located in all main European countries, Australia, US and Asia with our headquarters in Denmark and production facilities in Germany, Denmark, Hungary, Singapore, China, Italy and the US.

We supply quality high pressure washers to agriculture, automotive and industrial companies, cleaning contractors and private consumers.

Gerni is a product driven company with focus on innovation and growth. We believe in developing and maintaining long lasting relationships with our customers, suppliers and employees.

*No claims can be made on the basis of information or illustrations contained in this catalogue. Subject to alteration of technical data, design and equipment.*

Distributed by



Aus Waterblasters

9 Deebing Street

West Ipswich QLD 4305

Ph: 07 3812 1112

Email: [info@auswaterblasters.com.au](mailto:info@auswaterblasters.com.au)

[www.auswaterblasters.com.au](http://www.auswaterblasters.com.au)

**Gerni**  
- danish cleaning power